



Commercial/Residential



2308 Highway 35 North

Rockport, Texas 78382

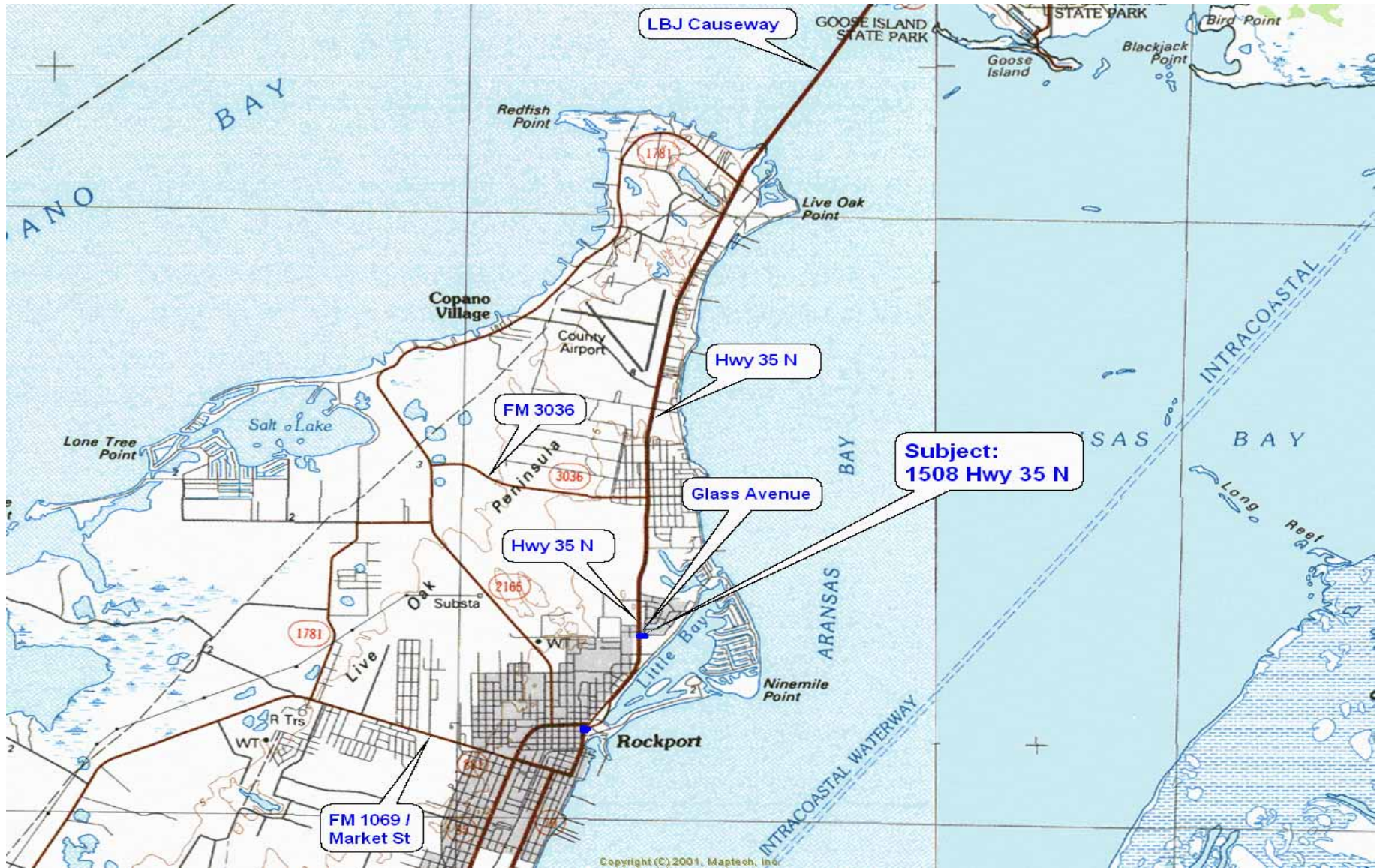
361-729-0544

www.haynes-realty.com

sales@haynes-realty.com

Rockport, TX

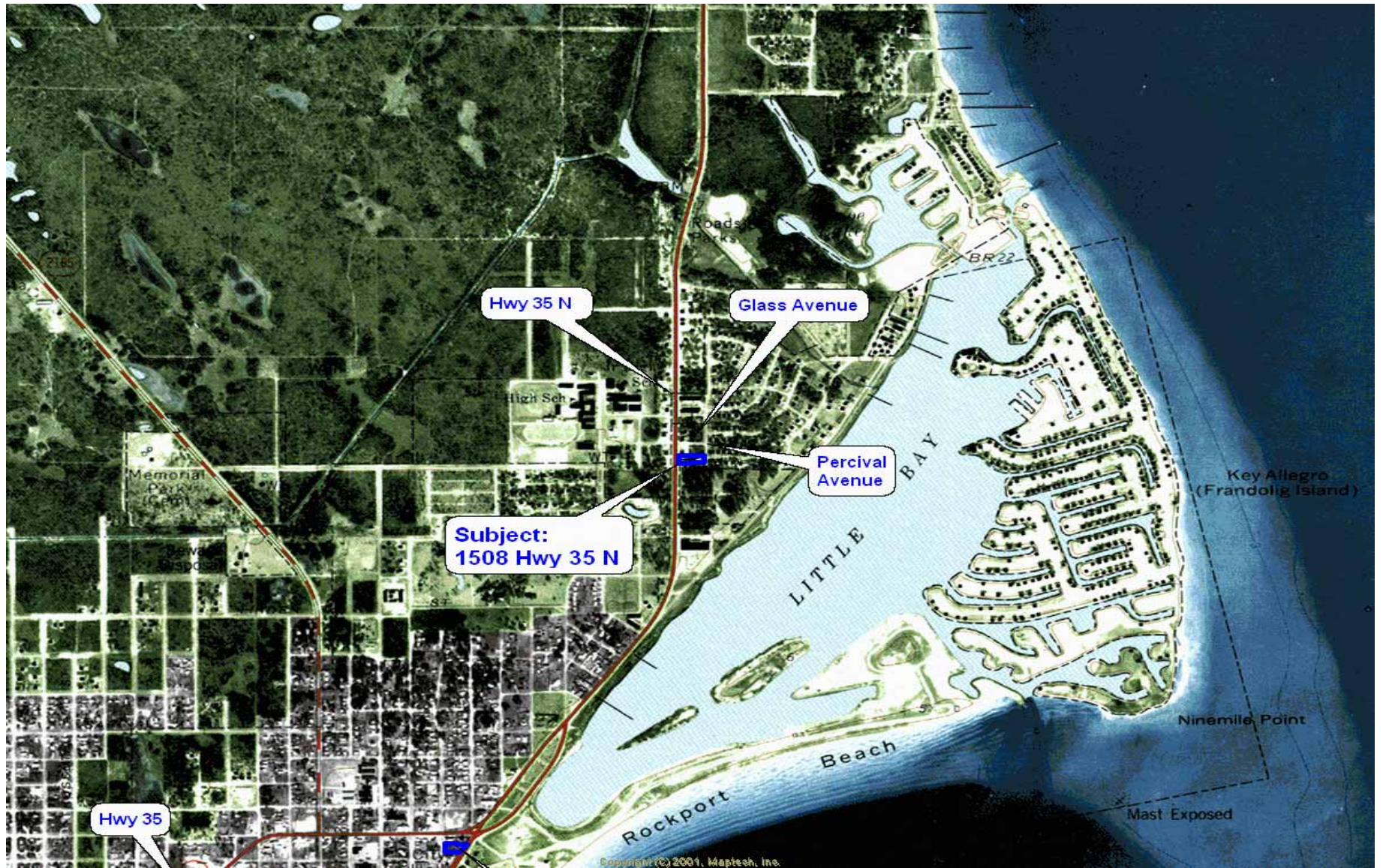
The accuracy or adequacy of this information is not guaranteed. No representations or warranties either expressed or implied are made as to the accuracy thereof. Property is subject to prior sale, change, or withdrawal without notice.



2308 Highway 35 North
 Rockport, Texas 78382
 361-729-0544
www.haynes-realty.com
sales@haynes-realty.com

Site Map

The accuracy or adequacy of this information is not guaranteed. No representations or warranties either expressed or implied are made as to the accuracy thereof. Property is subject to prior sale, change, or withdrawal without notice.



2308 Highway 35 North
Rockport, Texas 78382
361-729-0544
www.haynes-realty.com
sales@haynes-realty.com

Topographical Map

The accuracy or adequacy of this information is not guaranteed. No representations or warranties either expressed or implied are made as to the accuracy thereof. Property is subject to prior sale, change, or withdrawal without notice.



2308 Highway 35 North
Rockport, Texas 78382
361-729-0544
www.haynes-realty.com
sales@haynes-realty.com

Satellite Aerial

The accuracy or adequacy of this information is not guaranteed. No representations or warranties either expressed or implied are made as to the accuracy thereof. Property is subject to prior sale, change, or withdrawal without notice.



2308 Highway 35 North

Rockport, Texas 78382

361-729-0544

www.haynes-realty.com

sales@haynes-realty.com

Residential space on Percival

The accuracy or adequacy of this information is not guaranteed. No representations or warranties either expressed or implied are made as to the accuracy thereof. Property is subject to prior sale, change, or withdrawal without notice.



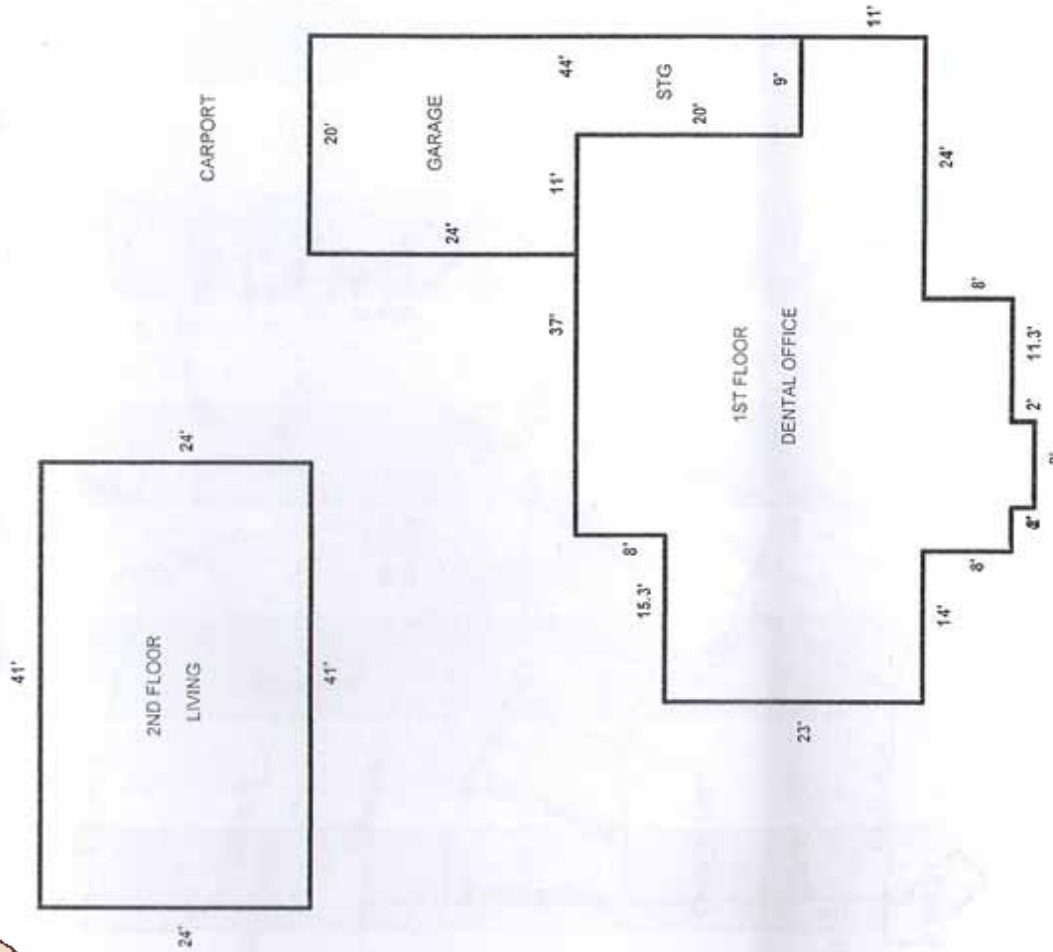
2308 Highway 35 North
Rockport, Texas 78382
361-729-0544

www.haynes-realty.com
sales@haynes-realty.com

Garage and boat storage

The accuracy or adequacy of this information is not guaranteed. No representations or warranties either expressed or implied are made as to the accuracy thereof. Property is subject to prior sale, change, or withdrawal without notice.

Building layout



SUMMARY	SQ FT AREA	PERIMETER	AREA CALCULATION DETAILS
Living Area	1800	205	First Floor 37.0 X 31.0 = 1147.0
First Floor	984	130	15.3 X 23.0 = 351.9
Second Floor	2784	335	9.0 X 11.0 = 99.0
			22.0 X 8.0 = 176.0
			1.3 X 8.0 = 10.4
			8.0 X 2.0 = 16.0
			Total 1800.3
Garage/Carport	660	128	Second Floor 41.0 X 24.0 = 984.0
Garage/Storage			

The accuracy or adequacy of this information is not guaranteed. No representations or warranties either expressed or implied are made as to the accuracy thereof. Property is subject to prior sale, change, or withdrawal without notice.

Acreage: 25,100 +/- square feet
Dimensions: 100' by 251' deep
Location: 1508 Hwy 35 N, just south of Glass on the east side of Hwy 35
County: Aransas County, TX
Utilities: All city utilities
Comments: This is an excellent location. With 100 feet of prime Hwy 35 N frontage, gorgeous Oaks, a great business and residential space and terrific storage for an RV, boat and two cars this is an exceptional property. Currently serving as a dental office and residential space for Dr. Ramey, this property could easily be maintained as a dental office/residence. The building has approximately 1800 square feet of space on the ground level and another 984 square feet used as a residence upstairs. In addition, the property has another 660 square feet of garage/storage.

Price: \$ 695,000
Terms: Cash to Seller.

